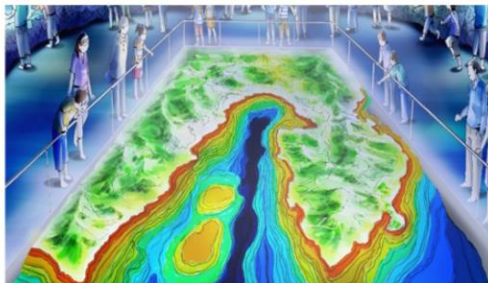


To Make Shimizu a City of Maritime Culture...

We're Building a Marine & Earth Sciences Museum at the Pier!

Concept Behind the Exhibits

Feeling a Connection Between Oneself, the Sea, and the Earth
- Made Possible by Suruga Bay



All images are for illustrative purpose only.

Purposes of the Museum

1. Branding Shimizu as an International Hub of Maritime Culture

Forming the image of an international city of maritime culture and branding Shizuoka, by combining Suruga Bay-centric maritime culture and marine science research functions

2. Attracting International Visitors and Energizing the Area

Creating a maritime culture-themed space that's grounded on earth, attracting cruise passengers and other international guests as well as visitors from within Japan

3. Promoting Research and Education in Marine and Maritime Fields

Building a base to develop future generations of marine scientists, including those who will take their skills from Shizuoka and contribute to the world at large.

4. Promoting Marine Industries and Expanding Their Economic Impact

Making a place where industrial and academic marine concerns can meet, leading to the creation of new industries that will support the city's future.

The Future of the Hinode Area of Shimizu Port

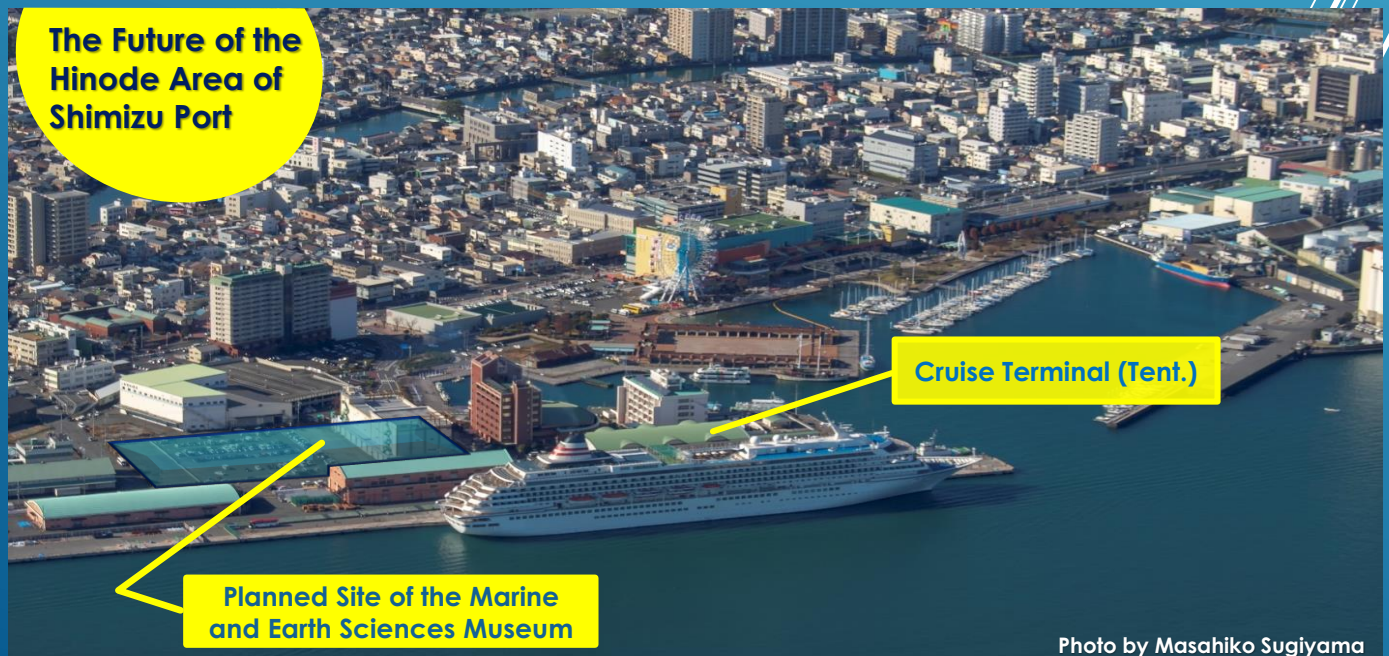


Photo by Masahiko Sugiyama

A Global Ocean Frontier, Starting from Shimizu

Marine and Earth Sciences Museum

Our museum aims to transcend the aquariums and museums that have come before with exhibits that show how the earth and sea work as one. A museum with a totally unique point of view, it will be a new hub for this city of maritime culture.

3 Keywords That Sum Up the Exhibits

FEEL the Earth and Sea as the Cradles of Life

REVEAL the Links Between the Sea, Earth, and You

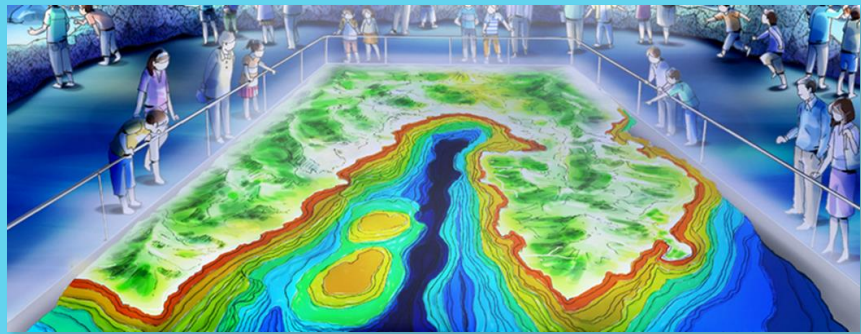
UNLOCK the Secrets of the Unknown

Exhibit Illustrations



Entrance

Gives visitors the feeling that they are plunging into the vast sea



Our Suruga Bay

Using an array of effects, shows how Suruga Bay was formed and its present state



Suruga Bay: Inland Water

Experience the connections between the inland water and creatures that have made Suruga Bay what it is, as well as its unique geography and vegetation



Suruga Bay: The Shallows

An oversize aquarium tank and interactive exhibits show the connection between humans and the shallows, as well as the geographical features



Suruga Bay: The Depths

A space modeled after the world of the deep sea, showcasing its mysteries and possibilities



Researching the Deep Sea and the Earth

Showcases the research of JAMSTEC and Tokai University using a variety of media, such as interactive science exhibits to unravel the mysteries of the earth



Playing with Suruga Bay

An exhibit space that uses the deep sea and Suruga Bay as its motifs, with lots of interactive exhibits that parents and children can enjoy



Exit

Feel the mysteries of Suruga Bay, and take a step into the future together with the men and women researching it